

# FLEXPECT-LABELLING



**FlexXpect is a modular Vision platform. In combination with the powerful Xpectia-hardware, it takes you into a new dimension of specialisation.**

FlexXpect-Labeling has been designed to deliver tailored functionality for inspection of labels and packages.

## Features of FlexXpect-Labeling:

- Strong OCR/OCV
- Code reading (Barcode, Datamatrix)
- 360° inspections of bottles
- Real colour processing items
- High resolution
- Easy & intuitive configuration



## Label unwrapping from bottles for inspection of premium beverages:

- Acquire images from up to 4x cameras
- Compensate the distortion
- Identify the overlapping areas
- Stitch the images together



# FLEXPECT-LABELLING

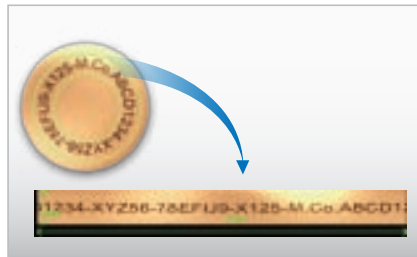
## Powerful image processing tools for labelling:

- OCR/OCV
- Barcode/Datamatrix
- Pattern and edge tools
- Real colour inspection
- High resolution to detect minute defects

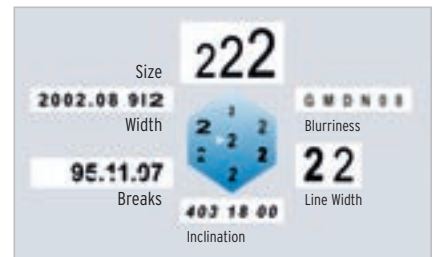
### Date/Batch code verification (OCR/OCV)



### Polar transformation of round strings



### Strong OCR/OCV



FlexXpect-Labelling utilizes the latest OCR algorithms to reliably read character data printed by ink-Jet, thermal transfer or laser marking. Even when print varies in size, width, spacing, inclination and form, FlexXpect-Labelling can verify the code.

### Position and defect inspection



Produce aesthetically perfect products is a key point. FlexXpect-Labelling offers a suite of image processing tools to inspect the label for position and defects.

### Reading different codes at a time



Two or more different codes in the same field of view can be read by utilizing a high resolution camera. This function helps to reduce the inspection time.

### High speed code reading



Item description	Order code
FlexXpect-Labelling software module	FLEXXPECT-LABELLING

**Note:** FlexXpect software modules require Xpectia/FZW hardware. This is not part of the item and needs to be ordered independently.